

Where to find us:



SWADLINCOTE CENTRE
4a Boardman Industrial Estate
Boardman Road
Swadlincote
DE11 9DL



BURTON CENTRE
Units B & C
Rolleston Industrial Estate
Hawkins Lane
Burton-on-Trent
DE14 1PT



RIPLEY CENTRE
Victoria Place
Victoria Road
Ripley
DE5 3FW



PINXTON CENTRE
Unit 2
42 Brookhill Road
Pinxton
NG16 6NT



STAVELEY CENTRE
Unit 1B Hartington Industrial Estate
Deepdale Close
Staveley
S43 3YF



BARLBOROUGH CENTRE
Unit 2
Magnet Business Park
High Hazels Road
Barlborough
S43 4UZ

Chameleon
School of Construction Ltd
Training for an ever changing world

Call us on:
01283 213427 or 07819 060245
enquiries@chameleonschoolofconstruction.co.uk
www.chameleonschoolofconstruction.co.uk

20
21
Brochure



Chameleon
School of Construction Ltd
Training for an ever changing world

Courses available:

- Plastering
- Bricklaying
- Wall & Floor Tiling
- Motor Vehicle Maintenance



Funding available subject to eligibility

Centres in Swadlincote, Burton-on-Trent, Ripley, Pinxton, Staveley, and Barborough
Call 01283 213427 or visit www.chameleonschoolofconstruction.co.uk



WELCOME

Welcome to Chameleon School of Construction Ltd, where you can be guaranteed a first-class quality training experience.

We offer fully accredited Diplomas Level 1, 2 and 3, as well as NVQs Levels 2 and 3. Many of our accredited courses are fully funded from 16+.

Our short bricklaying, plastering and tiling courses are available as both 5 day and evening courses subject to availability.

Head of Training **Jason Duncan APC** has over 20 years trade experience with 8 of those years working within the Further Education sector teaching plastering at all levels. He has completed a time served apprenticeship where he was taught all aspects of plastering from traditional techniques to the more modern techniques taught today. Jason is a member of the Worshipful Company of Plasterers.

Jason and his experienced, fully qualified team are on hand for the duration of your course to offer you their wealth of knowledge and expertise, whether you are undertaking a recognised qualification or simply wanting to learn new skills to enhance your home or add to your trade knowledge.

Chameleon School of Construction are well received by local schools, training organisations, awarding bodies, and construction companies having been nominated for and won many awards. Chameleon School of Construction representatives were also invited by the Prime Minister to No 10 Downing Street.



CSCS TEST CENTRE

Chameleon School of Construction are your local approved training and testing centre for the **CSCS** Health and Safety competence cards. Our scheme and facilities are available to both students and the general public. We can also advise on your application procedure. Tests are available verbally (with headphones) if preferred. We also offer the tests in a variety of languages

We offer free parking and can often book a test for the following day..

Tests £43.00* (incl. VAT)

From the 1st July 2014 those who need a CSCS Green Card can obtain one by completing a **Level 1 Health & Safety in a Construction Environment** qualification. This includes those entering the construction industry plus those who are renewing their card. Successful completion of this qualification will enable learners to apply for the Construction Skills Certificate Scheme (CSCS) Green Card which allows access to construction sites in the UK as a non-skilled worker. Unlike the Site Safety Plus, you do not have to re-sit this after 5 years. **This course costs £198.00* (incl. VAT) and includes a CSCS test.**

Course content includes general responsibilities, introduction to health and welfare, work at height, manual handling, PPE (personal Protective Equipment), handheld equipment and tools, site transport safety, accident prevention, reporting, noise and vibration, hazardous substances, electrical safety, emergency procedures and first aid, fire protection and control. This qualification is distance learning, you learn at your own pace. You will be provided with a learning pack and a DVD to assist passing this qualification. Once you have completed your workbook and it has been assessed, you will be invited to our Swadlincote testing centre to sit the 50 question online test.

***Please note once the test has been passed, there is an additional £36 payable to CITB in order to obtain the card.**



IMI LEVEL 2 MOTOR VEHICLE MAINTENANCE

Fully funded for 16-18's and 19+ unemployed and employed* You will learn a variety of skills ranging from how to remove and strip engines and suspension systems to more detailed diagnostics. The level 2 qualification will enable the learners to become a semi qualified motor vehicle technician or continue onto higher qualifications to become a master technician.

For all 16-18 yrs this qualification forms part of the STUDY PROGRAMME, Maths & English up to Level 2 functional skills will be included within this programme dependent upon previous qualifications and ability. Real work experience within the local community forms part of this qualification for all learners. There are 4 main areas within this level each having an on-line test. 9 units complete level 2 working internally and externally on vehicles going from changing an interior light to replacing a camshaft.

Some of the units are as follows:

- Diagnosing braking systems measuring components
- Removing and stripping suspension systems to check for defects
- Stripping engines and measuring items within the engine
-

These are only some of the units to be completed, all the units go deeper in to the vehicle learning more technical configurations and how to fix more complex issues.

You will be able to work on both training and live vehicles, can plan and carry out servicing, if you know nothing about vehicles we can show you your way around a vehicle going onto to basic diagnostics including replacing parts of vehicles. Parts we replace include everything from wheels, tyres, brakes and suspension all the way to stripping down engines replacing internal parts. We also like to encourage projects throughout the duration of the course.



Health and Safety:

Safety while on this course is paramount - this is a hands on, practical course - and it is essential you bring your own safety boots, (steel toe cap). It is also recommended that you bring with you overalls or a change of clothing. Any other safety equipment required will be provided. All materials, tool, and equipment are provided throughout the duration of your training.

Entry Requirements:

There are no formal entry requirements for this qualification. However, you must ensure that you have the potential and opportunity to successfully gain the qualification.

Course timetable:

Please call for dates, time and availability.



IMI LEVEL 1 MOTOR VEHICLE MAINTENANCE

Fully funded for 16-18's. You will learn a variety of skills ranging from how to check the oil on a vehicle to complete engine repairs and diagnostics. The level 1 qualification will enable the learners to start their journey to become a fully qualified motor vehicle technician or continue onto higher qualifications to become a master technician.

For all 16-18 yrs this qualification forms part of the STUDY PROGRAMME, Maths & English up to

Level 2 functional skills will be included within this programme dependent upon previous qualifications and ability. Real work experience within the local community forms part of this qualification for all learners. The qualification is a level 1 diploma course consisting of 21 units which have been chosen to gain the best experience for the learners to work within a motor vehicle workshop as a fast fit style technician.

Some of the units are as follows:

The Braking system, Suspension system, Fitting wheels and tyres, Replacing exhaust systems. And a lot more units all have practical and knowledge assessments which are incorporated throughout the duration of the course. The course has 1 on-line assessment to cover the health and safety aspects and all the other assessments will be either workshop based or classroom assessments and we make most of the learning very practical.

Health and Safety:

Safety while on this course is paramount - this is a hands on, practical course - and it is essential you bring your own safety boots, (steel toe cap). It is also recommended that you bring with you overalls or a change of clothing. Any other safety equipment required will be provided. All materials, tool, and equipment are provided throughout the duration of your training.

Entry Requirements:

There are no formal entry requirements for this qualification. However, you must ensure that you have the potential and opportunity to successfully gain the qualification.

Course timetable:

Please call for dates, time and availability.



WORK EXPERIENCE FOR 16-18yrs

Chameleon School of Construction is proactive in training future tradespeople for construction work by providing work experience.

Want to gain skills? Want to know what it's like to work for a construction company? Want to put your construction skills into practice in a real life setting, working with employers and on domestic properties?

Chameleon School of Construction understands the importance of gaining a qualification, but it's vital to match qualifications with experience.

Why is work experience so important?

- Young people are more likely to be successful in obtaining a career within construction if they have completed work experience.
- It's the best way to get a real sense of your chosen industry.
- Evidence that you have completed some work experience shows to a potential employer that you are motivated.
- Work experience gently introduces you to the world of work, you get to learn the do's and don'ts giving you an idea of the trade skills and personal skills you will need to thrive in the workplace.
- It will help you identify your own skills and perhaps even highlight the areas that you might want to work on so you have a good understanding of your strengths and weaknesses.
- Work experience gives you something to put on your CV.

The following companies have supported Chameleon by offering site visits and work experience: Woodhead Group, Taylor Wimpey, Strata, Bovis Homes, Kier Group, Willmott Dixon, and other local companies surrounding our 6 centres



EdExcel BTEC IN CONSTRUCTION

These qualifications are particularly suited to those who are still within school. **BTEC Level 1 & 2** qualifications are designed to enhance learners' work and life skills in a range of vocational contexts. They are appropriate for a diverse range of learners including:

- 14-16 year-old learners
- Those seeking to develop greater independence
- Those who have not yet achieved accredited qualifications
- Those with specific learning needs.

The intended destinations for learners successfully achieving these qualifications include:

- GCSEs and/or A Levels.
- Diplomas.
- Apprenticeships.
- Supported employment.
- Independent living.



Edexcel qualifications are available at Award, Certificate and Diploma levels.

Doing these qualifications, you will gain a taste of Brickwork, Plastering, and Tiling.

If you discover that Construction is for you then you can progress onto a more advanced learning experience completing these. **£90 + VAT per provision**

LEVEL 1 DIPLOMA IN PLASTERING

Fully funded for 16-18 year-olds, the CSkills Level 1 Diploma in Plastering is designed to prepare you to enter the construction industry. It has been specifically developed for delivery in a training environment using simulated conditions, and the test(s) are based on you showing what you can do as an individual through the completion of all the requirements of the qualification.

For all 16-18 year-olds this qualification forms part of the STUDY PROGRAMME, Maths & English up to Level 2 functional skills will be included within this programme dependent upon previous qualifications and ability. Real work experience within the local community forms part of this qualification for all learners.

The qualification comprises:

- General core units.
- Occupation specific units.
- Synoptic practical assignments.
- Multiple choice unit end tests.
- Online testing of knowledge.

All the units of training must be completed. ALL outcomes must be achieved during the training programme. (Evidence from site based testing is not permissible.)

To gain the diploma you must achieve all units, the synoptic practical assignment and multiple choice unit tests. This qualification contains both practical and theory based elements.

Units:

- Carry out safe working practices in construction.
- Information, quantities, and communicating with others.
- Building methods and construction technology.
- Prepare background surfaces and plaster materials.
- Apply plaster materials to internal backgrounds.
- Produce components from moulds.

Health and Safety:

Safety while on this course is paramount - this is a hands on, practical course - and it is essential you bring your own safety boots, (steel toe cap). It is also recommended that you bring with you overalls or a change of clothing. Any other safety equipment required will be provided. All materials, tool, and equipment are provided throughout the duration of your training.

Entry Requirements:

There are no formal entry requirements for this qualification. However, you must ensure that you have the potential and opportunity to successfully gain the qualification.

Course timetable:

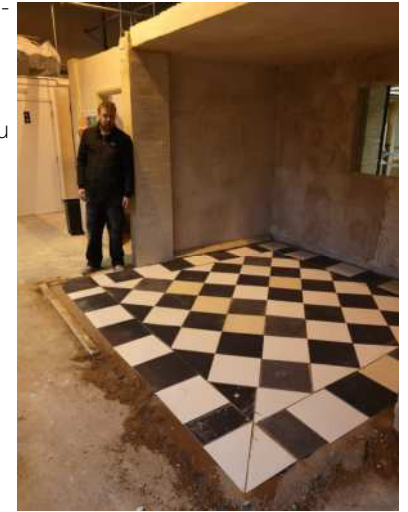
Please call for dates, time and availability.



Wall and Floor Tiling – 5 Day Short Course (£624 Inc. VAT)

This is the ideal Tiling Course for the person who wishes to gain the relevant skills necessary to undertake a range of domestic tiling projects. This Wall and Floor Tiling Course has been designed to take you from a novice with little or no experience, to a level where you have confidence to start tiling either within your own property projects or as the start of a new career. Subjects Covered:

- Demonstrating all the tools required.
- Surface preparation, setting out, tiling, cutting tiles, grouting and sealing.
- Creating gauging rods for measuring and planing.
- Cutting tiles using wet tile cutters, dry tile cutters, tile scribes, tile snips and tile saws.
- Explaining all the different adhesives used for different surfaces.
- Setting out and cutting around windows and reveals.
- How to tile to angled ceilings and around socket areas.
- Setting out and cutting around WC, pedestal & pipes.
- Grouting, grout cleaning and polishing.
- Preparation for the application of silicon.



Bricklaying – 5 Day Short Course (£624 Inc. VAT)

This is the ideal Bricklaying Course for the person who wishes to tackle their own bricklaying jobs or for those who wish to try a short course before embarking upon a full qualification. During our bricklaying course you will gain enough knowledge and practical experience to complete brickwork projects at home.

Subjects Covered:

- How to set out bricklaying projects
- How to work with different bonds including Stretcher, Flemish and English
- Setting out building lines
- Building square and vertical walls
- Building a corner, pier, pillar and solid/cavity walls
- Pointing up for face work
- Inclusion of a damp course
- Installation of lintels



SHORT COURSES

Traditional Heritage Plastering - 2 Day Short Course (£300 Inc. VAT)

The course is aimed at individuals that are either currently studying plastering or are already plasterers wishing to further their skills and knowledge. It is also suitable for enthusiasts that want to learn about applying traditional techniques in historic buildings or within a traditional home. Lime/Sand Plastering onto Lath and Solid backgrounds.

Subjects Covered:

- Health and Safety working practices
- Selecting materials, tools and equipment
- Fixing laths
- Applying pricking up coat
- Applying floating coat
- Applying finishing coat
- Protection of work area and surroundings



Plastering Course – 5 Day Short Course (£624 Inc. VAT)

This is the ideal Plastering Course for the person who wishes to plaster but has little or no previous experience of plastering, or tradesmen who are sometimes faced with plastering situations while carrying out their own work.

Subjects Covered:

- The correct method of measuring and cutting plasterboard
- The correct method of fixing plasterboard
- The application of sand and cement render and bonding as backing coats to brick and block walls ensuring a flat level surface
- Angle beads cutting and fixing
- The use of jointing tape
- Skimming and finishing to a smooth finish ready for decorating
- Invisible repairing damaged plasterboard
- Tools and equipment advice and training
- Plaster products explained

Course timetable: Please call for dates, time and availability. (We are flexible and 5 days can be split). Although not a formal qualification a Certificate of Achievement will be awarded.

Health and Safety:

Safety while on this course is paramount - this is a hands on, practical course - and it is essential you bring your own safety boots, (steel toe cap). It is also recommended that you bring with you overalls or a change of clothing. All materials, tools, and equipment are provided throughout the duration of your training.



LEVEL 2 DIPLOMA IN PLASTERING

Fully funded for 16-18 yrs and 19+ unemployed and employed*

The CSkills Level 2 Diploma in Plastering is designed to further develop the skills and knowledge, enabling them to work in the industry in their chosen craft.

It has been specifically developed for delivery in a training environment using simulated conditions, and the test(s) are based on you showing what you can do as an individual through the completion of all the requirements of the qualification.

For all 16-18 yrs this qualification forms part of the STUDY PROGRAMME, Maths & English up to Level 2 MAY be included within this programme dependent upon previous qualifications and ability. Real work experience within the local community forms part of this qualification for all learners.

The qualification comprises:

- General core units.
- Occupation specific units.
- Synoptic practical assignment.
- Multiple choice unit end tests.
- Online testing of knowledge.

All the units of training must be completed by you. ALL outcomes must be achieved during the training programme. (Evidence from site based testing is not permissible.) To gain the diploma you must achieve all units, the synoptic practical assignment and multiple choice unit tests online. This qualification contains both practical and theory based elements.

Units:

- Carry out safe working practices in construction.
- Information, quantities and communicating with others.
- Building methods and construction technology.
- Apply plaster materials to internal surfaces.
- Apply plaster materials to external surfaces.
- Fix dry lining and plasterboard products to interiors.
- Form sand and cement screeds.
- Produce plaster components.
- Position and secure fibrous plaster components.

Health and Safety:

Safety while on this course is paramount - this is a hands on, practical course - and it is essential you bring your own safety boots, (steel toe cap). It is also recommended that you bring with you overalls or a change of clothing. Any other safety equipment required will be provided. All materials, tools, and equipment are provided throughout the duration of your training.

Entry Requirements:

There are no formal entry requirements for this qualification. However, you must ensure that you have the potential and opportunity to successfully gain the qualification.

Course timetable:

Please call for dates, time and availability.

Price: £3200 + VAT (*funding may be available – subject to eligibility and availability).

Shorter Intensive Courses are also available. Please call 01283 213427 for more information



LEVEL 3 DIPLOMA IN PLASTERING

Fully funded for 16-18 yrs*

The Level 3 Diploma in Plastering is designed to develop the skills and knowledge of people, enabling them to work in the industry in their chosen craft. It has been specifically developed for delivery in a training environment using simulated conditions, and the test(s) are based on you showing what you can do as an individual through the completion of all the requirements of the qualification.

The qualification comprises:

- General core units.
- Occupation specific units.
- Synoptic practical assignment.
- Multiple choice unit end tests.
- Online testing of knowledge.



All the units of training must be completed by you. ALL outcomes must be achieved during the training programme. (Evidence from site based testing is not permissible.) To gain the diploma, you must achieve all units, the synoptic practical assignment and multiple choice unit online tests. This qualification contains both practical and theory based elements.

Units:

- Carry out safe working practices in construction.
- Information, quantities and communicating with others.
- Building methods and construction technology.
- Fix dry lining and plasterboard products to interiors.
- Produce plaster components.
- Position and secure fibrous plaster components.
- Apply plaster materials to produce complex internal surfaces.
- Apply plaster materials to produce complex external surfaces.
- Form screeds and granolithic finishes.
- Prepare and run in-situ moulds.



Health and Safety:

Safety while on this course is paramount - this is a hands on, practical course and it is essential you bring your own safety boots, (steel toe cap). It is also recommended that you bring with you overalls or a change of clothing. Any other safety equipment required will be provided. All materials, tools, and equipment are provided throughout the duration of your training.

Entry Requirements:

There are no formal entry requirements for this qualification. However, you must ensure that you have the potential and opportunity to successfully gain the qualification.

Course timetable:

Please call for dates, time and availability.

Price: £3300 + VAT (*funding for learners of all ages may be available – subject to eligibility and availability).

LEVEL 2/3 NVQs IN CONSTRUCTION



We offer Level 2 and Level 3 NVQ's in the following subject areas:

- Bricklaying
- Plastering
- Wall and Floor Tiling



The aim of these qualifications is to recognise the knowledge, skills, and competence demonstrated by an individual in the workplace.

These Level 2 and Level 3 NVQs provide the opportunity for individuals who specialise in construction trade areas to demonstrate their competence.

All evidence for your portfolio must be genuine and collected on site.

Cost: £999+ VAT Funding may be available.



LEVEL 2 DIPLOMA IN WALL & FLOOR TILING

Fully Funded for 16-18yrs and 19+ Unemployed and Employed* This Level 2 Diploma in Wall and Floor Tiling is designed to develop the skills and knowledge of people, enabling them to work in the industry in their chosen craft. It has been specifically developed for delivery in a training environment using simulated conditions and the test (s) are based on the learner showing what they can do as an individual through the completion of all the requirements of the qualification. All the units of training must be completed. ALL outcomes must be achieved during the training programme (evidence from site based testing is not permissible). To gain the diploma you



must achieve all units, the synoptic practical assignment, and multiple choice online test.

For all 16-18 year olds this qualification forms part of the STUDY PROGRAMME, Maths & English up to Level 2 MAY be included within this programme dependent upon previous qualifications and ability. Real work experience within the local community forms part of this qualification for all learners.

Units

- Carry out safe working practice in construction
- Information, quantities, and communicating with others
- Building methods and construction technology
- Form sand and cement screeds
- Prepare background surfaces for tiling
- Tile wall surface
- Tile Floor surface



Entry requirements

There are no formal entry requirements for this qualification. However, you must ensure that you have the potential and opportunity to successfully gain the qualification.

Health and Safety:

Safety while on this course is paramount - this is a hands on, practical course - and it is essential you bring your own safety boots, (steel toe cap). It is also recommended that you bring with you overalls or a change of clothing. Any other safety equipment required will be provided. All materials, tools, and equipment are provided throughout the duration of your training.

Entry Requirements:

There are no formal entry requirements for this qualification. However, you must ensure that you have the potential and opportunity to successfully gain the qualification.

Course timetable:

Please call for dates, time and availability.

Price £3200 + VAT (funding may be available – subject to eligibility and availability)

Shorter Intensive Courses are also available. Please call 01283 213427 for more information.

LEVEL 1 DIPLOMA IN BRICKLAYING

Fully Funded for 16-18yrs, the Level 1 Diploma in Bricklaying is designed to prepare learners to enter the industry in their chosen craft. It has been specifically developed for delivery in a training environment using simulated conditions, and the test(s) are based on the learner demonstrating their knowledge and skills through the completion of all the requirements of the qualification.



For all 16-18 yrs this qualification forms part of the STUDY PROGRAMME, Maths & English up to Level 2 MAY be included within this programme dependent upon previous qualifications and ability. Real work experience within the local community forms part of this qualification for all learners.

The qualification comprises:

- Mandatory units.
- Synoptic practical assignment.
- Multiple choice unit end tests.
- Online testing of knowledge.

All the units of training must be completed. ALL outcomes must be achieved during the training programme. (Evidence from site based testing is not permissible.) To gain the diploma you must achieve all units, the synoptic practical assignment, and multiple choice online unit tests. This qualification contains both practical and theory based elements.

Units

- Carry out safe working practices in construction.
- Information, quantities and communicating with others.
- Building methods and construction technology.
- Carry out basic blocklaying.
- Carry out basic bricklaying.
- Carry out basic cavity walling.
- Contribute to setting out and building basic masonry structures up to a damp course level.

Health and Safety:

Safety while on this course is paramount - this is a hands on, practical course - and it is essential you bring your own safety boots, (steel toe cap). It is also recommended that you bring with you overalls or a change of clothing. Any other safety equipment required will be provided. All materials, tools, and equipment are provided throughout the duration of your training.

Entry Requirements:

There are no formal entry requirements for this qualification. However, you must ensure that you have the potential and opportunity to successfully gain the qualification.

Course timetable:

Please call for dates, time and availability.



LEVEL 2 DIPLOMA IN BRICKLAYING

Fully Funded for 16-18yrs and 19+ unemployed and employed* The Level 2 Diploma in Bricklaying is designed to develop the skills and knowledge of learners, enabling them to work in their industry in their chosen craft. It has been specifically developed for delivery in a training environment using simulated conditions, and the test(s) are based on the learner showing what they can do as an individual through the completion of all the requirements of the qualification.

For all 16-18 yrs this qualification forms part of the STUDY PROGRAMME, Maths & English up to Level 2 MAY be included within this programme dependent upon previous qualifications and ability. Real work experience within the local community forms part of this qualification for all learners.

The qualification comprises:

- General core units.
- Occupation specific units.
- Synoptic practical assignment.
- Multiple choice unit end tests.
- Online testing of knowledge.



All the units of training must be completed. ALL outcomes must be achieved during the training programme. (Evidence from site based testing is not permissible.) This qualification contains both practical and theory based elements. To gain the diploma you must achieve all units, the synoptic practical assignment and multiple choice online tests.

Units

- Carry out safe working practices in construction.
- Information, quantities, and communicating with others.
- Building methods and construction technology.
- Interpret working drawings to set out masonry structures.
- Thin joint masonry and masonry cladding.
- Build solid walling, isolated and, attached piers.
- Build cavity walling forming masonry structures.



Health and Safety:

Safety while on this course is paramount - this is a hands on, practical course - and it is essential you bring your own safety boots, (steel toe cap). It is also recommended that you bring with you overalls or a change of clothing. Any other safety equipment required will be provided. All materials, tools, and equipment are provided throughout the duration of your training.

Entry Requirements:

There are no formal entry requirements for this qualification. However, you must ensure that you have the potential and opportunity to successfully gain the qualification.

Course timetable:

Please call for dates, time and availability.

Price £3200 + VAT (*funding may be available – subject to eligibility and availability).

Shorter Intensive Courses are also available please call 01283 213427 for more information.

LEVEL 3 DIPLOMA IN BRICKLAYING

Fully funded for 16-18 yrs*

The Level 3 Diploma in Bricklaying is designed to develop the skills and knowledge of people, enabling them to work in their industry in their chosen craft. It has been specifically developed for delivery in a training environment using simulated conditions, and the test(s) are based on the learner showing what they can do as an individual through the completion of all the requirements of the qualification.

The qualification comprises:

- General core units
- Occupation specific units
- Synoptic practical assignment
- Multiple choice unit end tests
- Online testing of knowledge



All the units of training must be completed. ALL outcomes must be achieved during the training programme. (Evidence from site based testing is not permissible.) To gain the diploma you must achieve all units, the synoptic practical assignment, and multiple choice unit tests. This qualification contains both practical and theory based elements

Units:

- Health, safety and welfare in construction and associated industries.
- Analysing information, quantities and communication with others.
- Analysing the construction industry and built environment
- Repair and maintain masonry structures
- Construct chimneys and fireplace structures
- Construct complex masonry structures
- Construct decorative features



Health and Safety:

Safety while on this course is paramount - this is a hands on, practical course - and it is essential you bring your own safety boots, (steel toe cap). It is also recommended that you bring with you overalls or a change of clothing. Any other safety equipment required will be provided. All materials, tools, and equipment are provided throughout the duration of your training.

Entry Requirements:

There are no formal entry requirements for this qualification. However, you must ensure that you have the potential and opportunity to successfully gain the qualification.

Course timetable:

Please call for dates, time and availability.

Price: £3300 + VAT (*funding for learners of all ages may be available – subject to eligibility and availability).